



Welcome to Craig High School

High school will bring many new opportunities. . .

- * More choices of classes, especially as you progress through high school
- * Lots of clubs and activities to get involved in
- * Many different sports to participate in

Also new pressures – don't let peer pressure run your life

Teacher will have certain expectations . .

- Regular attendance
- Arrive to class on time
- Complete and turn in assignments
- Good behavior

Tips to help you succeed . . .

Keep organized – use the Student Planner that you are given

Take good notes in class and review them periodically before the quiz or exam.



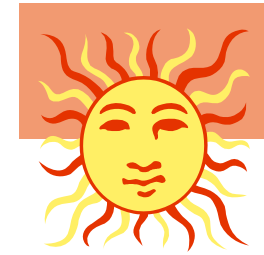
Set aside study time

Get enough sleep every night

Start planning for life after high school. *Your counselor can help you with this!* As a freshman, you will get your login and password during advisory. This will allow you access to WISCareers, an Internet-based career and school exploration program.



As a sophomore, you will be given the opportunity to take a career assessment, which will match your interests with possible careers.



The Student Center

- Counselors
- Psychologist
- Police Liaison Officer
- Advisory Coordinator
- Guidance Secretary
- Advisement Secretary

Craig High School Counselors. . .

- Are assigned to every high school student alphabetically by last names:
 - A-K Shelly Osmond
 - L-Z Audrey Fiore
- Have an average caseload of 825 students
- Follow the same caseload to graduation
- Hold a minimum of a Master's degree in School Counseling and state certification

Counselors are planning on visiting students in their advisories. This will cover scheduling, graduation requirements, Grade Point Average/Class Rank, College Information and Scholarship Information.

Please see Mrs. Severin to make an appointment with your counselor any other time. We meet with students either during their Study Hall or before or after school.

Regarding your schedule . . .

Counselors will make schedule changes for the following 5 reasons

1. Making up a failed course
2. Ineligibility to take the course

How important are your grades?

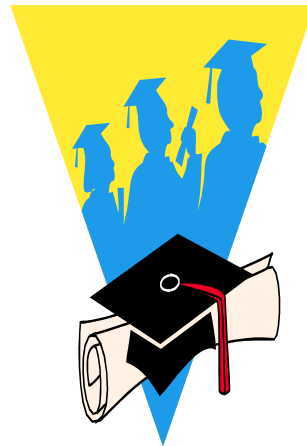
VERY . . . Especially if you are planning on attending some type of schooling after high school. People from the technical school or college will be looking at your grades from freshman, sophomore, and junior years to determine admission.

It's important to make a good start and keep up your grades throughout high school.

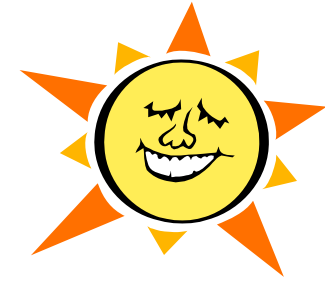
Starting High School can be a big transition. There are lots of people here to help you – your teachers, your counselor, your advisor, the Student Assistance program, your coaches (if you're in a sport), the P.A.W.S. tutoring program, and the list goes on.

Be sure to advocate for yourself and ask for help if you need it.

We want you to be successful at Craig.



Craig High School Student Services



Craig homepage
<http://janesville.k12.wi.us/cra/>

Student Services Staff

Albert Gonzalez, psychologist, 743-5257
agonzalez@janesville.k12.wi.us
Nicole Shucha, advisement coor., 743-5361
nshucha@janesville.k12.wi.us
Tom Lemery, police liaison officer, 743-5213
tlemery@janesville.k12.wi.us
Mary Severin, secretary, 743-5251
mseverin@janesville.k12.wi.us
Shelly Osmond, counselor (A – K), 743-5253
sosmond@janesville.k12.wi.us
Audrey Fiore, counselor (L–Z), 743-5255
adimaggiofiore@janesville.k12.wi.us