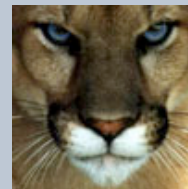





# Library, Technology & Webpage

Mrs. Christine Pumilia  
Library Media Specialist



[craighighschool.org](http://craighighschool.org)

Library Media Center (LMC)	Student Technology	Web
<p><b>Library hours: 7:30-4:30</b></p> <p><b>Resources:</b></p> <p>Checkout limit is 5 items. Need ID to checkout.</p> <p><b>Books</b>/3 weeks/5¢ a day fine</p> <p><b>Audio Books</b>/3 weeks/5¢ a day fine</p> <p><b>eBooks</b>/1 week/no fines</p> <p><b>Movies&amp;CD's</b>/1week/50¢ a day fine</p> <p><b>Magazines</b>/1week/50¢ a day fine</p> <p><b>Equipment</b>/1day/\$5 a day fine</p> <p>If a student has \$10.00 in fines, they may not check out items until the fine is paid.</p>	<p><b>Internet and Technology Safety Policy for Students</b></p> <p><b>Labs</b> in LMC-2 PC and 1 Mac</p> <p>Many labs and computers located throughout Craig.</p> <p><b>Google School and District:</b></p> <p>Email Calendar Drive</p>  <p><b>Edmodo School and District:</b></p>  <p>A tool to bring the classroom to life.</p> <p>Engage students Connect to resources Measure student progress</p>	<p>Athletics</p> <p>Bell Schedules</p> <p>Calendars</p> <p>Clubs and Activities</p> <p>Cougar Café</p> <p>Daily Announcements</p> <p>Departments</p> <p>New "For Parents" Page</p> <p>Newsletters</p> <p>Schedules</p> <p>Student Services</p> 

Craig High School provides programs to promote academic, social, physical & emotional development of all students.



